

3D-Dig *Mining Simulation*



Earth Technology Pty Ltd.
Australia/Asia Pacific
8 Dargie St, Everton Park, Qld, Australia 4053
Phone mob +61 400 553 933

Agents in the Americas, Europe and Africa
contacted via:

email: info@earthtechnology.net
web: www.earthtechnology.net or www.3ddig.com.au



Simulation, Visualisation, Modelling, Communication, Scheduling, Pit Design, Digital Terrain Modelling, Simulation, Visualisation, Modelling, Communication, Scheduling, Pit Design



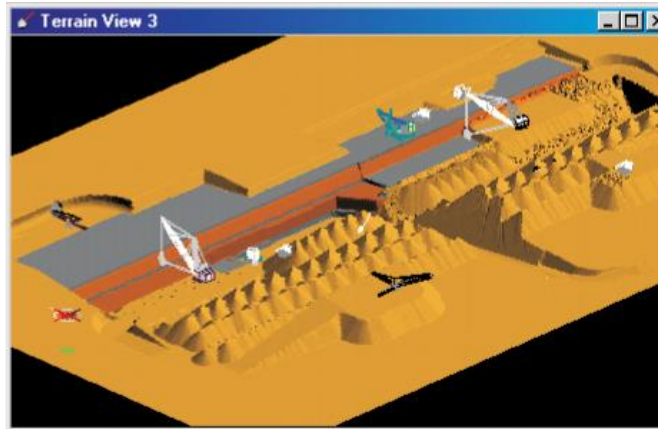
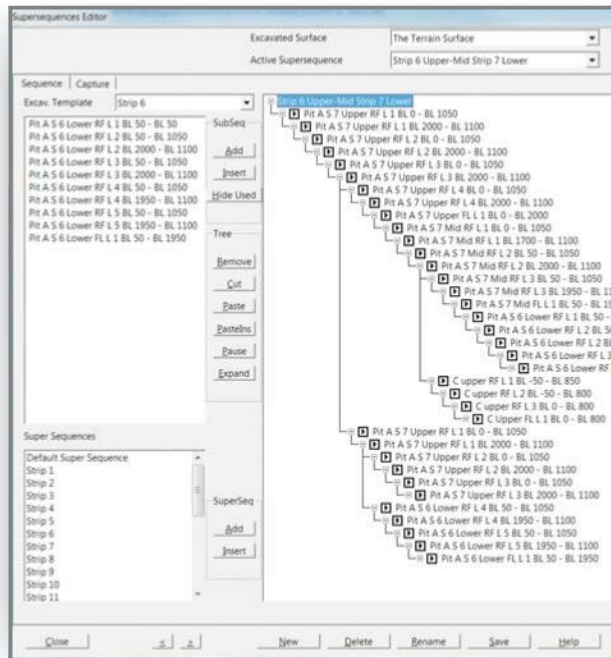


3D-Dig

Mining Simulation

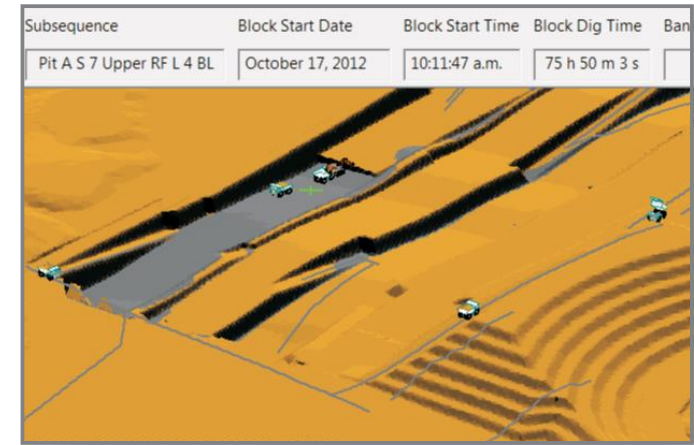
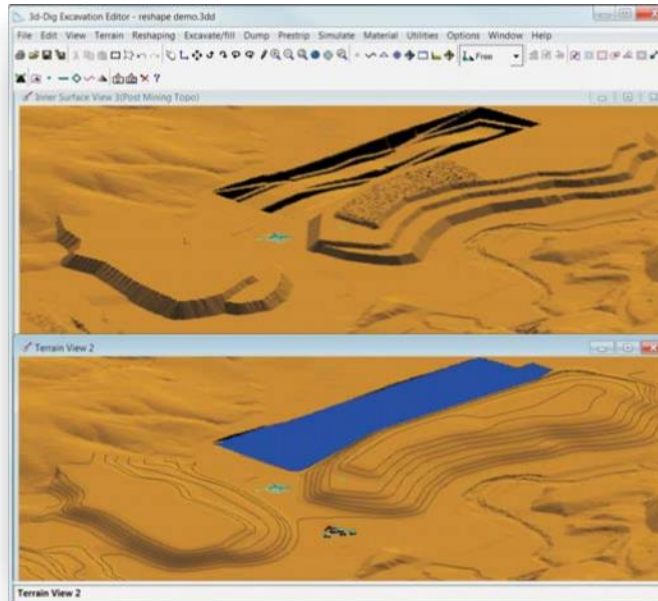
3D Simulation of Mining Processes - Excavation, Transport and Dumping.

- ▲ The flexible modelling system allows for highly detailed incremental simulation conforming to a schedule.
- ▲ Fleet productivity for draglines, truck-shovel and dozer systems is supported with full dynamic simulation of equipment using haul/transport routes.
- ▲ Detailed animations are produced for the operation which may be run independently on any PC or tablet.
- ▲ Detailed volumetric and productivity reports are produced including calendar timing.
- ▲ Topographic models of the operation at any stage of the schedule can be produced & exported.
- ▲ Selective dump (material) modelling is supported including stratified dumps.



The 3D-Dig Mining Simulation System Includes Modules for:

- ▲ Generic and Topographic Simulation.
- ▲ Automated Excavation and Dump Sequencing.
- ▲ Dragline Simulation.
- ▲ Truck & Shovel Simulation.
- ▲ Bulldozer Simulation.
- ▲ Environmental Reshaping.



3D-Dig Provides the Following Benefits and Applications:

- ▲ Life of mine landform and spoil transport analysis.
- ▲ Optimization of pit design, scheduling and spoil placement.
- ▲ Troubleshooting studies targeting issues such as access and spoil fit.
- ▲ Researching and validating new and novel mining methods.
- ▲ Highly effective communication tool for both corporate and field communications.
- ▲ Assists and supports equipment purchasing and upgrade decisions.
- ▲ Improved allocation of waste to different equipment types.

The 3D-Dig advanced modelling functionality is accessed via a user-friendly graphical interface. All functions and settings can be accessed by an intuitive system of menus, buttons and dialog boxes.

The system comes with comprehensive online manuals as well as extensive training material and resources.

To download a video brochure, visit our website and go to the Support Downloads Page:

www.earthtechnology.net